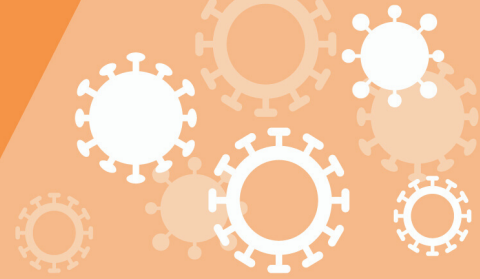


HOW TO PREVENT THE SPREAD OF COVID-19



Three simple steps for cleaning and disinfecting high-touch surfaces:



Clean up surfaces that are touched often, like railings, toilets and door handles. Throw away trash.



Disinfect surfaces with a mixture of 1/3 cup chlorine bleach and one gallon of water.* Disinfectant must remain on the surface for at least one minute.



Wash your hands using soap and water for at least 20 seconds. Rinse, and dry with a clean disposable towel.

*Or an EPA-registered cleaning product.
Always read and follow manufacturer's directions.