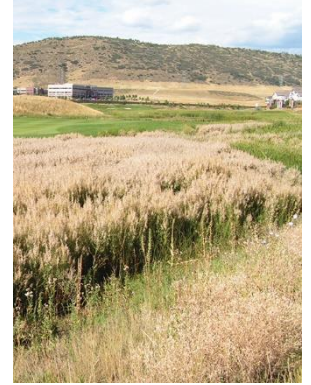




Hairy Willow-herb

Epilobium hirsutum



Hairy Willow-herb

General	Family: Evening Primrose (<i>Onagraceae</i>) Semi-aquatic herbaceous perennial Introduced from Europe as an ornamental Colorado List A - ERADICATION REQUIRED
Common names	Great willowherb, Codlins and cream
Habitat	Perennial forb Colony forming Found in wetlands, drainages, and rights-of-way Was sold as an ornamental in the past Very invasive
PLANT	
Vegetation	Mature plants up to 6 feet tall Leaves opposite and lance-shaped with toothed edges- 1/2 inches wide and up to 4 inches long Stem erect and branched with soft hairs
Roots	Fibrous roots, rhizomes, and stolons
Flower	Pink or purple with white center and notched petals June to August 1/2-1 inch wide
Seed	White silky tuft in long seedpod
Seedling	Plants re-sprout from roots in the spring
Reproduction	Seed, rhizomes and stolons

CONTROL -- CHEMICAL		
<i>Timing</i>	<i>Herbicide</i>	<i>Notes</i>
Spring to Early Summer Actively growing to early flowering stage	Aminopyralid (Milestone) Glyphosate (labeled for aquatic use, various) Imazamox (Clearcast) Imazapyr (Habitat) Triclopyr (Garlon 3A, others)	Use of a surfactant is recommended for most herbicides to help increase contact with the vegetation and to facilitate herbicide uptake. Refer to the specific label for the appropriate type of surfactant. Refer to the individual label for allowed sites, specific timing, and restrictions. Formulations with more than one active ingredient are available. Control will take a few years so treatment will need to be repeated.
CONTROL -- NON-CHEMICAL		
<i>Technique</i>	<i>Timing</i>	<i>Method</i>
Biological	N/A	
Burning	N/A	
Cultivation	N/A	Cultivation severs the roots which will regrow plants from the fragments.
Grazing	N/A	
Mowing	Early Spring - Prior to bud stage	Repeat as needed.
Prevention	Anytime	Maintain the health of the site by encouraging healthy stands of desirable plants. Revegetation of highly disturbed sites.
Removal	N/A	

Use all chemicals according to the manufacturer's label. The label will provide specific instructions including allowed sites, application methods, rates, storage, re-entry requirements and personal protective equipment. No specific recommendation or endorsement is made or implied by listing the above methods or products. 9/2021