



CRL ASSOCIATES, INC.



Jefferson County (Website)

2,253 Attendees

Attendees	Peak Attendees	Entered Queue	Screened	Contributed	Went Live	Voicemails
2,176 (Outbound) 62 (Inbound) 12 Hosts 3 Screeners	538	45	36	0	13	20

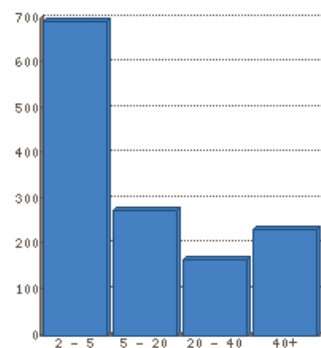
Minutes and Totals

Access Live Length	Type	Total Minutes	Avg Minutes
60 minutes	Direct Connect	23,855 (3,412 Inbound)	17

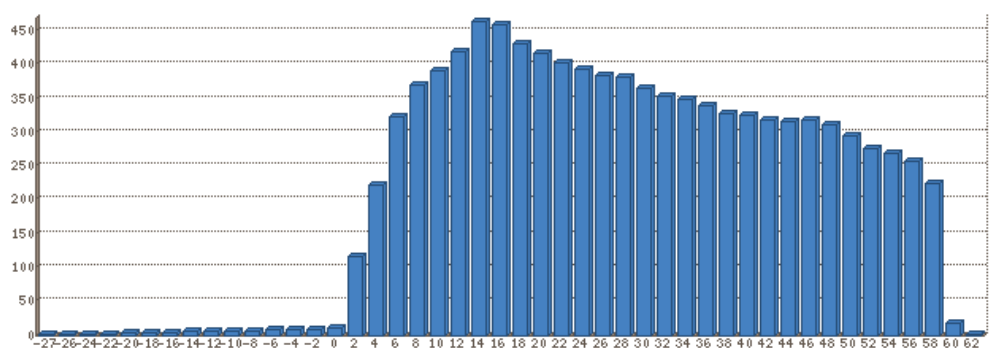
Streaming Audio Minutes and Totals

Total Streaming Audio Users	Total Streaming Audio Minutes	Avg Minutes	Total Streaming Audio Questions
8	122	15.25	0

Callers Grouped By Duration



Callers On Each Minute



JEFFERSON COUNTY COLORADO

Jefferson County

Polls

Question	Time Asked	Responses																				
1. Jefferson County would like to have more civic engagement to help inform our budget development process. What would be the best way to engage you?	18:15	<table border="1"> <thead> <tr> <th>Answer</th> <th>Key</th> <th>Votes</th> <th>%</th> </tr> </thead> <tbody> <tr> <td>Place a survey or budget modeling tool on the Jeffco.us websi</td> <td>1</td> <td>52</td> <td>47%</td> </tr> <tr> <td>Hold in-person focus groups at Jefferson County locations</td> <td>2</td> <td>26</td> <td>23%</td> </tr> <tr> <td>Obtain input from Jeffco residents at events such as farmerâ€™s</td> <td>3</td> <td>33</td> <td>30%</td> </tr> <tr> <td>Total Votes:</td> <td></td> <td>111</td> <td></td> </tr> </tbody> </table>	Answer	Key	Votes	%	Place a survey or budget modeling tool on the Jeffco.us websi	1	52	47%	Hold in-person focus groups at Jefferson County locations	2	26	23%	Obtain input from Jeffco residents at events such as farmerâ€™s	3	33	30%	Total Votes:		111	
Answer	Key	Votes	%																			
Place a survey or budget modeling tool on the Jeffco.us websi	1	52	47%																			
Hold in-person focus groups at Jefferson County locations	2	26	23%																			
Obtain input from Jeffco residents at events such as farmerâ€™s	3	33	30%																			
Total Votes:		111																				
2. What action would you support Jefferson County taking? Some of these actions would require additional steps before the county could move forward.	18:45	<table border="1"> <thead> <tr> <th>Answer</th> <th>Key</th> <th>Votes</th> <th>%</th> </tr> </thead> <tbody> <tr> <td>Generating sales tax revenue to help reduce road congestion a</td> <td>1</td> <td>77</td> <td>41%</td> </tr> <tr> <td>Building toll roads and/or toll lanes and using the toll reve</td> <td>2</td> <td>19</td> <td>10%</td> </tr> <tr> <td>Assessing a County-wide fee on vehicle registration to fund t</td> <td>3</td> <td>40</td> <td>21%</td> </tr> </tbody> </table>	Answer	Key	Votes	%	Generating sales tax revenue to help reduce road congestion a	1	77	41%	Building toll roads and/or toll lanes and using the toll reve	2	19	10%	Assessing a County-wide fee on vehicle registration to fund t	3	40	21%				
Answer	Key	Votes	%																			
Generating sales tax revenue to help reduce road congestion a	1	77	41%																			
Building toll roads and/or toll lanes and using the toll reve	2	19	10%																			
Assessing a County-wide fee on vehicle registration to fund t	3	40	21%																			

3. Due to legislative changes for Colorado, counties are now allowed to charge a county specific sales tax on retail marijuana. Should Jeffco allow retail marijuana sales only and collect the corresponding sales tax?

19:07

None of the above. Continue with minor road improvements und	4	52	28%
Total Votes:	188		

Answer	Key	Votes	%
No	1	38	26%
Yes " direct funds to range of uses	2	41	28%
Yes " direct funds to law enforcement	3	11	8%
Yes " direct funds to human services	4	24	17%
Yes " direct funds to transportation	5	30	21%
Total Votes:	144		

Broadcast Summary

Graph	Code	Result	Count	Percent
	1002	Live Answer	11,068	23 %
	1009	Answering Machine	22,008	45 %
	1006	Busy	3,826	8 %
	1005	No Answer	1,295	3 %
	1008	Fax	571	1 %
	1003	Operator Intercept	10,211	21 %
	Total			48,979

Broadcasts

Access Live Broadcast (id 489990) - Access Live: Jefferson County Access Live 10/17 (ID 10646) (xx) (Direct Connect)
Status: Archived

Graph	Code	Result	Count	Percent
	1002	Live Answer	26	38 %
	1009	Answering Machine	40	59 %
	1003	Operator Intercept	2	3 %
Total			68	

Access Live Broadcast (id 489989) - Access Live: Jefferson County Access Live 10/17 (ID 10646) (xx) (Direct Connect)
Status: Archived

Graph	Code	Result	Count	Percent
	1002	Live Answer	30	47 %
	1009	Answering Machine	32	50 %
	1005	No Answer	2	3 %
Total			64	

Access Live Broadcast (id 489988) - Access Live: Jefferson County Access Live 10/17 (ID 10646) (xx) (Direct Connect)
Status: Archived

Graph	Code	Result	Count	Percent
	1002	Live Answer	7,005	22 %
	1009	Answering Machine	14,115	45 %
	1006	Busy	2,750	9 %
	1005	No Answer	840	3 %
	1008	Fax	356	1 %
	1003	Operator Intercept	6,619	21 %
Total			31,685	

Access Live Broadcast (id 489987) - Access Live: Jefferson County Access Live 10/17 (ID 10646) (xx) (Direct Connect)
Status: Archived

Graph	Code	Result	Count	Percent
	1002	Live Answer	4,007	23 %
	1009	Answering Machine	7,821	46 %
	1006	Busy	1,076	6 %
	1005	No Answer	453	3 %
	1008	Fax	215	1 %
	1003	Operator Intercept	3,590	21 %
	Total			17,162